

EXPLORER
CASES



EXPLORER



HARD CASES
MADE IN ITALY



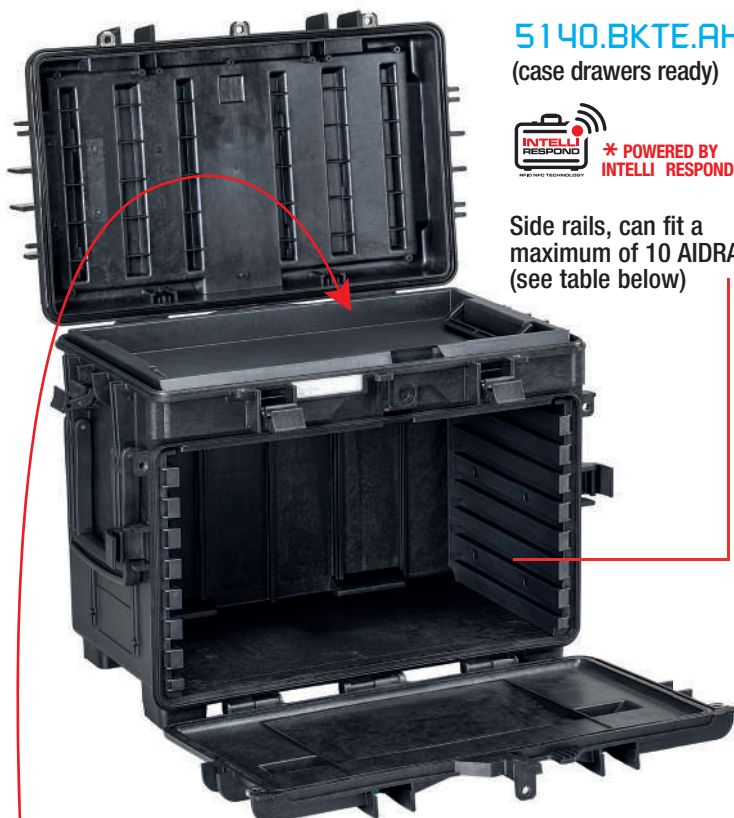
www.explorercases.com

MRO: TOOLS and SPARES
Storage & Transportation



MAINTENANCE

The modular design of the **5140** tool chest grants the user the possibility to create different configurations choosing among the various **accessories** available.



5140.BKTE.AH

(case drawers ready)



* POWERED BY INTELLI RESPOND

Side rails, can fit a maximum of 10 AIDRAW (see table below)

■ removable tray with two handles and identification nameplate label



AIDRAW3.E



AIDRAW3.F



AIDRAW6.E



AIDRAW6.F



AIDRAW9.E



AIDRAW9.F



removable drawers are provided with a special stop system



■ All drawers come out completely



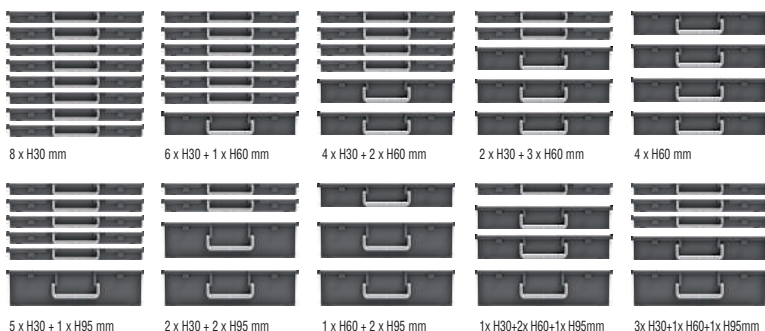
Art. AIPANEL PLEXI Transparent lid cover. Useful for foam inserts or readable instructions (optional).



AIWHEELS

4 pivoting wheels, 2 equipped with brakes (optional).

AIDRAW CONFIGURATIONS INSIDE THE #5140



5140		L	W	D		
		LENGTH	WIDTH	DEPTH	LID	BASE
External dim.	mm	581	381	455		
	in	22.87	15	17.91		
5140.BKTE.AH		black - AIDRAW ready		Weight	kg 9,75	lbs 21.49
Temp. rating	°C min -33 max +90			°F min -27.4 max +194		
Certifications	IP67 - STANAG 4280 (ed. 2) - DEF STAN 81-41 (lev. J)					



REPAIR OPERATIONS

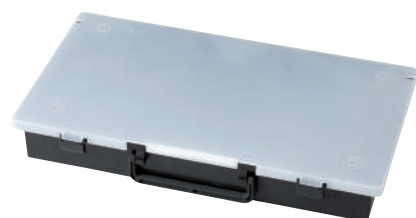
The AIBOXES are the ultimate **EXPLORER CASES** modular solution for the storage, transport and use of sets of spare parts, components and tools, making them the ideal companion for all kinds of MROs. The **AIBOXES** can be used as stand-alone packaging solutions or stored, carried, shipped and deployed in multi-units using one of the **EXPLORER CASES** readily available carriers.

Available in 3 different heights:



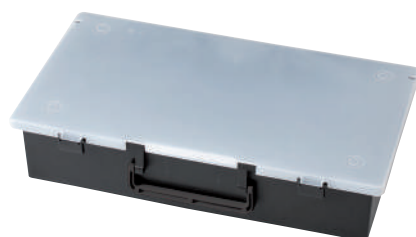
Int. Dim.:
467x255xH30 mm
18.38x10.03xH1.18 in

I H 30 mm



Int. Dim.:
467x255xH60 mm
18.38x10.03xH2.36 in

I H 60 mm



Int. Dim.:
467x255xH95 mm
18.38x10.03xH3.74 in

I H 95 mm



- The **AIBOXES** are made by injection moulded copolymer PP and come with a translucent fully detachable lid.
- They can be stacked positively and can stand vertically.



**INDIVIDUAL RF-ID CHIP AND
COLOR CODING ON EACH AIBOX
AVAILABLE SOON**

AIBOX CHART		
ART.	INTERNAL CONFIGURATION	INT. DIM. (mm)
AIBOX3.E	EMPTY	467x255xH30
AIBOX3.F	BI-COLOR PRECUBED FOAM	
AIBOX6.E	EMPTY	
AIBOX6.F	BI-COLOR PRE CUBED FOAM	467x255xH60
AIBOX6.B1	REMOVABLE BIN BOXES	
AIBOX9.E	EMPTY	
AIBOX9.F	BI-COLOR PRECUBED FOAM	467x255xH95
AIBOX9.B1	REMOVABLE BIN BOXES	

Available in various configurations:



with pick&pluck
bi-color foams highlight missing parts



with bin boxes
for small parts



empty
label for content identification



INTELLI RESPOND*

The «Intelli Respond» system is based on GT LINE's patented technology to embed the RFID and NFC chips into any one of our cases. The chips are embedded in the frontal part of the case, allowing a quick reading for both RFID and NFC technologies. A specific APP, available for both Android and IOS has been developed and is available for download.



**All the explorer cases can
accommodate the chips**





ENGINE OVERHAUL

Mod. 5140X.B

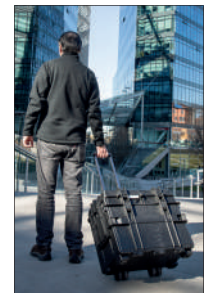
(empty - AIBOX ready)



* POWERED BY
INTELLI RESPOND

- Main features:
Sturdy injection molded body
- Large side handles, long trolley handles and 4 wheels
- Completely waterproof thanks to the 2 o-rings
- Can accommodate up to 8 drawers of various depths
- Variety of accessories available to configure for all kind of maintenance
- Mil Stan certifications, IP67 certified

The AIBOXES carried within the #5140 can be pulled out completely, and used remotely.



AIRWHEELS

4 pivoting wheels,
2 equipped with
brakes (optional).

AIBOX CONFIGURATIONS INSIDE THE #5140

7 x H30 mm	5 x H30 + 1 x H60 mm	3 x H30 + 2 x H60 mm	1 x H30 + 3 x H60 mm
4 x H30 + 1 x H95 mm	1 x H30 + 2 x H95 mm	2 x H60 + 1 x H95 mm	2 x H30 + 1 x H60 + 1 x H95 mm

5140		L	W	D		
		LENGTH	WIDTH	DEPTH	LID	BASE
External dim.	mm	581	381	455		
	in	22.87	15	17.91		
5140X.B	black - AIBOX ready			Weight	kg 9,75	lbs 21.49
Temp. rating	°C min -33 max +90			°F min -27.4 max +194		
Certifications	IP67 - STANAG 4280 (ed. 2) - DEF STAN 81-41 (lev. J)					



AVIATION SUPPORT



The Patented easy "Lock-Unlock" system allows each module to be quickly stacked and released from each other.

- You can now complement your 5140 tool chest with additional storage capacity, with these two new modules: 5116 and 5131.
- They can be used independently as reliable tool-boxes for extra hand tools, power tools and large spare parts, or can be stacked together with the traditional 5140 tool chest.

Mod. 5116.B

(convoluted foam in the lid and precubed foam in the bottom)



* POWERED BY INTELLI RESPOND



Mod. 5140 LID



The new retrofit-compatible stackable 5140 LID allows all previous versions of the 5140 toolboxes to be connected with 5116 and 5131 modules, providing everybody with the benefits of the new modules' functionality.

Int. Dim.: 516x296x50 mm - 20 5/16x11 5/8x1 15/16 in
Est. Dim.: 585x368x68 mm - 23 1/16x14 1/2x2 11/16 in

5116		L	W	D		
		LENGTH	WIDTH	DEPTH	LID	BASE
Internal dim.	mm	516	296	160	50	110
	in	20 5/16	11 5/8	6 5/16	1 15/16	4 5/16
External dim.	mm	585	368	198		
	in	23 1/16	14 1/2			

Weight empty	kg 3,3	lbs 7.27
Weight w/foam	kg 3,9	lbs 8.59
Volume	lt 24,4	gal 6.44
Buoyancy	kg/max 15,1	lbs/max 33.28

5131		L	W	D		
		LENGTH	WIDTH	DEPTH	LID	BASE
Internal dim.	mm	516	296	310	60	250
	in	20 5/16	11 5/8	12 3/16	2 3/8	9 13/16
External dim.	mm	585	368	348		
	in	23 1/16	14 1/2	13 11/16		

Weight empty	kg 4,8	lbs 10.58
Weight w/foam	kg 6	lbs 13.22
Volume	lt 47,3	gal 12.49
Buoyancy	kg/max 34,4	lbs/max 75.83

Temp. rating	°C min -33 max +90	°F min -27.4 max +194
--------------	--------------------	-----------------------

Certifications	IP67 - STANAG 4280 (ed. 2) - DEF STAN 81-41 (lev. J)					
----------------	--	--	--	--	--	--

Version	B	O	G	D	N	Y	BE	OE	GE	DE	NE	YE
Color												

Mod. 5131.B

(convoluted foam in the lid and precubed foam in the bottom)



* POWERED BY INTELLI RESPOND





LINE STATIONS



Mod. 5833X.B (empty - AIBOX ready)

- Internal railed area designed to accommodate up to 10 AIBOXES in the 3 available heights (30, 60 and 95 mm).



- Two men lift side handles
- Stainless steel padlockable points
- Self-oiling free running wheels
- Soft grip rubber handle



5833		L	W	D		
		LENGTH	WIDTH	DEPTH	LID	BASE
Internal dim.	mm	580	440	330	60	270
	in	22 13/16	17 5/16	13	2 3/8	10 5/8
External dim.	mm	670	510	372		
	in	26 3/8	20 1/16	14 5/8		
Weight empty	kg 10,54			lbs 23.23		
Weight w/foam	kg 12,65			lbs 27.88		
Volume	lt 84,2			gal 22.19		
Buoyancy	kg/max 62,0			lbs/max 136.68		
Temp. rating	°C min -33 max +90			°F min -27.4 max +194		
Certifications	IP67 - STANAG 4280 (ed. 2) - DEF STAN 81-41 (lev. J)					
	MIL-STD 810F					



The AIBOXES can be pulled out completely, and used remotely.

They can be stacked positively and can stand vertically.



AIRCRAFT MRO

The mod. 7745 is a sturdy waterproof NATO standard – IP67, Mil certified container. Provided with 2 wheels and extractable trolley handle, able to withstand heavy loads, comes with handles on both sides for easy handling and is padlock-able in many points. Made in copolymer polypropylene, it is the only of its kind fully skydrol resistant. Fully stackable for easy storage of more units.

Mod. 7745X.B (empty - AIBOX ready)

- Internal railed area designed to firmly accommodate up to 17 AIBOXES in the 3 available heights (30, 60 and 95 mm). Every AIBOX is housed in its own slot and therefore easily extractable.



Shipping label holder



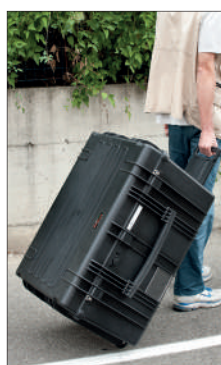
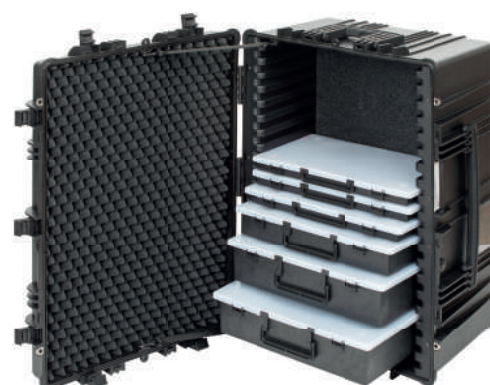
Automatic purge valve



Stainless steel reinforced padlockable points



Self-oiling free running wheels



7745		L	W	D		
		LENGTH	WIDTH	DEPTH	LID	BASE
Internal dim.	mm	770	580	450	90	360
	in	30 5/16	22 13/16	17 11/16	3 9/16	14 3/16
External dim.	mm	836	641	489		
	in	32 15/16	25 1/4	14 3/16		
Weight empty		kg 14,20			lbs 31.30	
Weight w/foam		kg 19,47			lbs 42.92	
Volume		lt 200			gal 52.83	
Buoyancy		kg/max 144			lbs/max 317.47	
Temp. rating	°C min -33 max +90	°F min -27.4 max +194				
Certifications	IP67 - STANAG 4280 (ed. 2) - DEF STAN 81-41 (lev. J)					



RANGE OF PATENTED PADLOCKS DESIGNED TO FIT SNUG TO ALL THE EXPLORER CASES, MOULD SO AS NOT TO SWING OUT (TSA APPROVED, WITH COMBI OR WITH KEY).

Ruggedized waterproof container proven to withstand dust, chemicals, humidity and extreme temperatures from -33°C to +90°C. It comes with 12 heavy duty metal latches to grant a more reliable retaining during rough handling. Can accommodate 8 to 24 of the AIBOXES in their 3 available heights (30, 60 and 95 mm).

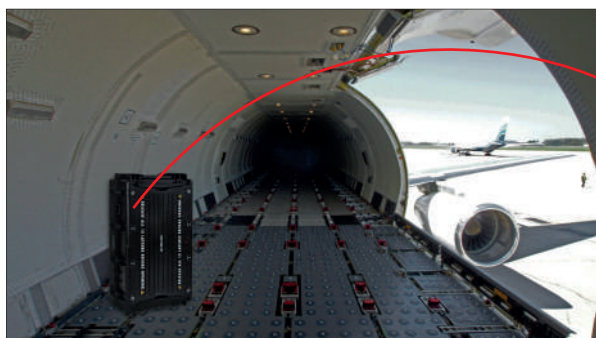


GROUND SERVICES



Mod. 10840X.B (empty - AIBOX ready)

- NATO standard – IP67, Mil certified
- Jam-free manual pressure release valve and O-ring seal
- Detachable lid for easier access
- Folding side handles on both shells
- Metal latches and stainless steel padlockable points
- Two man lift large folding side handles
- 4 self-oiling free running wheels
- Stackability



3-digits locks (optional)



For certain applications the case can be retained and secured by mean of a specific metal bracket. (# EX-METALPLATE).

10840		L	W	D		
		LENGTH	WIDTH	DEPTH	LID	BASE
Internal dim.	mm	1080	620	400	200	200
	in	42 1/2	24 7/16	15 3/4	7 7/8	7 7/8
External dim.	mm	1178	718	427		
	in	46 3/8	28 1/4	16 13/16		
Weight empty	kg	19,80		lbs 43.65		
Weight w/foam	kg	26,30		lbs 57.32		
Volume	lt	260		gal 68.68		
Buoyancy	kg/max	120,6		lbs/max 265.87		
Temp. rating	°C	min -33	max +90	°F	min -27.4	max +194
Certifications	IP67 - STANAG 4280 (ed. 2) - DEF STAN 81-41 (lev. J)					



EXPLORER
CASES

brand of
GT LINE
group

GT LINE srl a socio unico
Via del Lavoro, 9 - Loc. Crespellano
40053 Valsamoggia (Bo) - Italy
Tel. +39 051 65041 - Fax +39 051 734925
www.explorercases.com - sales@explorercases.com



REG. N. 1594-A
UNI EN ISO 9001:2015