



HARD CASES  
  
MADE IN ITALY

[www.explorercases.com](http://www.explorercases.com)

# MRO: TOOLS and SPARES Storage & Transportation



# MAINTENANCE

The modular design of the **5140** tool chest grants the user the possibility to create different configurations choosing among the various **accessories** available.



**5140.BKTE.AH**  
Case drawers ready

Side rails, can fit a maximum of 10 AIDRAW (see table below)

removable tray with two handles and identification nameplate label



AIDRAW3.E



AIDRAW3.F



AIDRAW6.E



AIDRAW6.F



AIDRAW9.E



AIDRAW9.F



removable drawers are provided with a special stop system



All drawers come out completely



Art. AIPANEL PLEXI Transparent lid cover. Useful for foam inserts or readable instructions (optional).



**AIWHEELS**  
4 pivoting wheels, 2 equipped with brakes (optional).



## AIDRAW CONFIGURATIONS INSIDE THE #5140

8 x H30 mm	6 x H30 + 1 x H60 mm	4 x H30 + 2 x H60 mm	2 x H30 + 3 x H60 mm	4 x H60 mm
5 x H30 + 1 x H95 mm	2 x H30 + 2 x H95 mm	1 x H60 + 2 x H95 mm	1x H30+2x H60+1x H95mm	3x H30+1x H60+1x H95mm

5140		L	W	D	LID	BASE
External dim.		LENGTH	WIDTH	DEPTH		
	mm	581	381	455		
	in	22.87	15	17.91		
5140.BKTE.AH	black - AIDRAW ready	Weight		kg 9,75	lbs 21.49	
Temp. rating	°C min -33 max +90		°F min -27.4 max +194			
Certifications	IP67 - STANAG 4280 (ed. 2) - DEF STAN 81-41 (lev. J)					



# REPAIR OPERATIONS

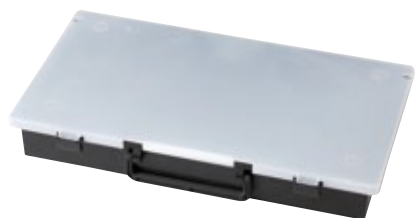
The AIBOXES are the ultimate **EXPLORER CASES** modular solution for the storage, transport and use of sets of spare parts, components and tools, making them the ideal companion for all kinds of MROs. The **AIBOXES** can be used as stand-alone packaging solutions or stored, carried, shipped and deployed in multi-units using one of the **EXPLORER CASES** readily available carriers.

## Available in 3 different heights:



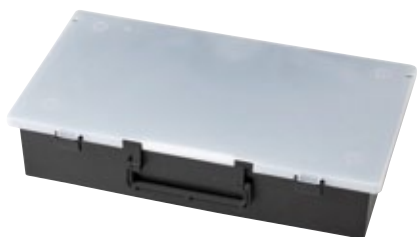
Int. Dim.:  
467x255xH30 mm  
18.38x10.03xH1.18 in

I H 30 mm



Int. Dim.:  
467x255xH60 mm  
18.38x10.03xH2.36 in

I H 60 mm



Int. Dim.:  
467x255xH95 mm  
18.38x10.03xH3.74 in

I H 95 mm



- The **AIBOXES** are made by injection moulded copolymer PP and come with a translucent fully detachable lid.
- They can be stacked positively and can stand vertically.



**INDIVIDUAL RF-ID CHIP AND  
COLOR CODING ON EACH AIBOX  
AVAILABLE SOON**

AIBOX CHART		
ART.	INTERNAL CONFIGURATION	INT. DIM. (mm)
AIBOX3.E	EMPTY	467x255xH30
AIBOX3.F	BI-COLOR PRECUBED FOAM	
AIBOX6.E	EMPTY	467x255xH60
AIBOX6.F	BI-COLOR PRE CUBED FOAM	
AIBOX6.B1	REMOVABLE BIN BOXES	
AIBOX9.E	EMPTY	467x255xH95
AIBOX9.F	BI-COLOR PRECUBED FOAM	
AIBOX9.B1	REMOVABLE BIN BOXES	

## Available in various configurations:



**with pick&pluck**  
bi-color foams highlight missing parts



**with bin boxes**  
for small parts



**empty**  
label for content identification



## INTELLI RESPOND

The «Intelli Respond» system is based on GT LINE's patented technology to embed the RFID and NFC chips into any one of our cases. The chips are embedded in the frontal part of the case, allowing a quick reading for both RFID and NFC technologies.

A specific APP, available for both Android and IOS has been developed and is available for download.



**All the explorer cases can  
accommodate the chips.**





# ENGINE OVERHAUL

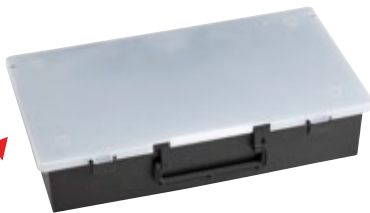


**Mod. 5140X.B**  
(empty - AIBOX ready)

Main features:

- Sturdy injection molded body
- Large side handles, long trolley handles and 4 wheels
- Completely waterproof thanks to the 2 o-rings
- Can accommodate up to 8 drawers of various depths
- Variety of accessories available to configure for all kind of maintenance
- Mil Stan certifications, IP67 certified

The AIBOXES carried within the #5140 can be pulled out completely, and used remotely.



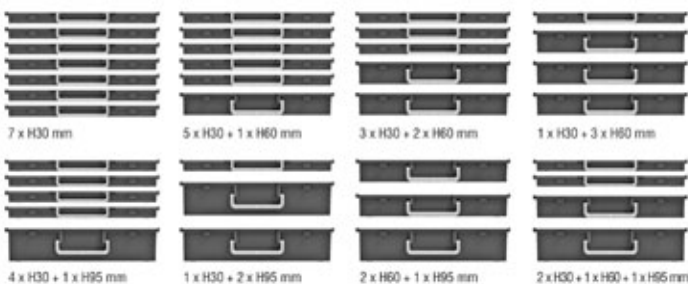
Stackability



## AIWHEELS

4 pivoting wheels, 2 equipped with brakes (optional).

## AIBOX CONFIGURATIONS INSIDE THE #5140



	5140		L	W	D		
	LENGTH	WIDTH	DEPTH	LID	BASE		
External dim.	mm	581	381	455			
	in	22.87	15	17.91			
5140X.B	black - AIBOX ready		Weight	kg 9,75	lbs 21.49		
Temp. rating	°C min -33 max +90		°F min -27.4 max +194				
Certifications	IP67 - STANAG 4280 (ed. 2) - DEF STAN 81-41 (lev. J)						



# LINE STATIONS

The mod. 7745 is a sturdy waterproof NATO standard – IP67, Mil certified container. Provided with 2 wheels and extractable trolley handle, able to withstand heavy loads, comes with handles on both sides for easy handling and is padlock-able in many points.

Made in copolymer polypropylene, it is the only of its kind fully skydrol resistant. Fully stackable for easy storage of more units.



## Mod. 7745X.B (empty - AIBOX ready)

- Internal railed area designed to firmly accommodate up to 17 AIBOXES in the 3 available heights (30, 60 and 95 mm).
- Every AIBOX is housed in its own slot and therefore easily extractable.



Shipping label holder



Automatic purge valve



Stainless steel reinforced padlockable points



Self-oiling free running wheels

7745		L	W	D		
		LENGTH	WIDTH	DEPTH	LID	BASE
Internal dim.	mm	770	580	450	90	360
	in	30 5/16	22 13/16	17 11/16	3 9/16	14 3/16
External dim.	mm	836	641	489		
	in	32 15/16	25 1/4	14 3/16		
Weight empty		kg 15,50		lbs 34.17		
Weight w/foam		kg 19,80		lbs 43.65		
Volume		lt 200		gal 52.83		
Buoyancy		kg/max 144		lbs/max 317.47		
Temp. rating		°C min -33 max +90		°F min -27.4 max +194		
Certifications		IP67 - STANAG 4280 (ed. 2) - DEF STAN 81-41 (lev. J)				



RANGE OF PATENTED PADLOCKS DESIGNED TO FIT SNUG TO ALL THE EXPLORER CASES, MOULD SO AS NOT TO SWING OUT (TSA APPROVED, WITH COMBI OR WITH KEY).





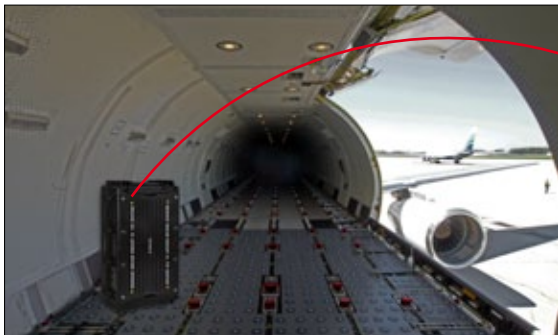
# GROUND SERVICES

The mod. 10840 is a ruggedized waterproof container proven to withstand dust, chemicals, humidity and extreme temperatures from -33°C to +90°C. It comes with 12 heavy duty metal latches to grant a more reliable retaining during rough handling. The case can accommodate 8 to 24 of the AIBOXES in the 3 available heights (30, 60 and 95 mm).



## Mod. 10840X.B (empty - AIBOX ready)

- NATO standard – IP67, Mil certified
- Jam-free manual pressure release valve and O-ring seal
- Detachable lid for easier access
- Folding side handles on both shells



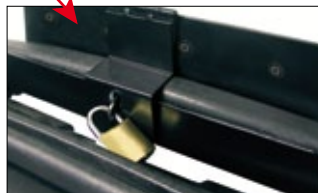
Stackability



3-digits locks (optional)



Heavy duty metal latches and stainless steel padlockable points



For certain applications the case can be retained and secured by mean of a specific metal bracket. (# EX-METALPLATE).



Two man lift large folding side handles



4 self-oiling free running wheels

10840		L	W	D	LID	BASE
		LENGTH	WIDTH	DEPTH		
Internal dim.	mm	1080	620	400	200	200
	in	42 1/2	24 7/16	15 3/4	7 7/8	7 7/8
External dim.	mm	1178	718	427		
	in	46 3/8	28 1/4	16 13/16		
Weight empty	kg 19,80		lbs 43.65			
Weight w/foam	kg 26,30		lbs 57.32			
Volume	lt 260		gal 68.68			
Buoyancy	kg/max 120,6		lbs/max 265.87			
Temp. rating	°C min -33 max +90		°F min -27.4 max +194			
Certifications	IP67 - STANAG 4280 (ed. 2) - DEF STAN 81-41 (lev. J)					



# FULLY TAILORED

High density custom foam inserts, and full range of tool pallets available on demand.

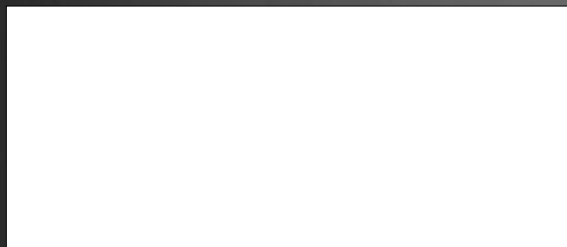


As for all EXPLORER CASES, a variety of standard colors is available.



Special colors and custom logos and configurations available subject to MOQ's.





GT LINE srl - Via del Lavoro, 9 - Loc. Crespellano  
40053 Valsamoggia (Bo) - Italy  
Tel. +39 051 65041 - Fax +39 051 734925  
www.explorercases.com - sales@explorercases.com

MP.0434 - PEG. MRO AEROSPACE 10\*19 - EN - 1.000  
All cases are sold empty (without equipment). All product names, logos, and brands are property of their respective owners.